

Infection Control Recommendations on Avian Influenza A (H7N9)

ICB / CHP

As of 23rd April 2013

No. of **Confirmed Case**: 108

No. of **death**: 22

Report Area	First Report Date	No. of confirmed case	No. of death case
Shanghai	31-03-2013	33	12
Anhui	31-03-2013	4	1
Jiangsu	02-04-2013	24	3
Zhejiang	03-04-2013	42	6
Beijing	13-04-2013	1	0
Henan	14-04-2013	3	0
Shandong	23-04-2013	1	0
Total		108	22

Recover: 14



Early case detection and notification

我們的抗疫理念，就是「早通報、早隔離、早治療」

Statutory Reporting

In view of the severity of illness of the confirmed cases, the Prevention and Control of Disease Ordinance (Cap. 599) (“the Ordinance”) has been updated the reporting criteria for Human Influenza A (H7).

Reporting criteria: <https://ceno.chp.gov.hk/casedef/casedef.pdf>

Clinical criteria		Epidemiological criteria
<p>Patient with</p> <ul style="list-style-type: none">➤ Influenza-like-illness (fever > 38°C with cough or sore throat); OR➤ person with severe pneumonia; OR<input type="checkbox"/>➤ person died of unexplained acute respiratory illness.	AND	<p>One or more of the following exposures in the 7 days prior to symptom onset:</p> <ul style="list-style-type: none">➤ contact with a human case of influenza A (H7N9); OR➤ contact with poultry or wild birds or their remains or to environments contaminated by their faeces in countries/areas with documented avian influenza A (H7N9) infection in birds and/or humans in the recent 6 months (see List of affected areas); OR➤ consumption of raw or undercooked poultry products in countries/areas with documented avian influenza A (H7N9) infection in poultry and/or humans in the recent 6 months (see List of affected areas), OR➤ close contact with a confirmed influenza A (H7N9) infected animal other than poultry or wild birds; OR➤ worked in a laboratory that is processing samples from persons or animals that are suspected from avian influenza infection

The list of affected areas is regularly uploaded to the Centre for Health Protection (CHP) website (http://www.chp.gov.hk/files/pdf/global_statistics_avian_influenza_e.pdf)

Reporting channel

- * An individual fulfilling both the *Clinical Criteria*

AND

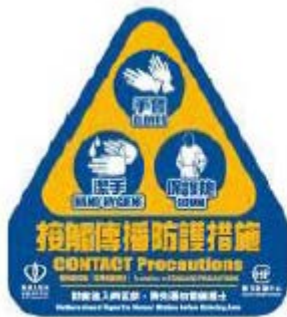
Epidemiological Criteria should be reported to the Central Notification Office (CENO) of CHP via

- * fax (2477 2770) using the reporting form,
- * phone (2477 2772) or
- * CENO On-line (<http://ceno.chp.gov.hk/>)

(Please also call Medical Control Officer at 71163300 a/c 9179 outside office hour for prompt investigation)

Isolation of suspected/confirmed case

- * Isolate in negative pressure airborne infection isolation room (AIIR)
- * Cohort cases with same etiological diagnosis if single rooms are full



Hand Hygiene



Personal Protective Equipment (PPE)

Handling of suspected case at triage station:

- * N95 respirator / surgical mask , eyes protection, gown and gloves

Care suspected / confirmed case:

- * N95 respirator, eyes protection, gown and gloves
- * Enhance alertness when performing high-risk aerosol-generating, e.g. endotracheal intubation, CPR, open suction etc. http://www.chp.gov.hk/files/pdf/ic_matrix.pdf

Recommended PPE for routine patient care and performing aerosol-generating procedures^(a) in hospitals/clinics for suspected or confirmed H7N9 infection

Apply standard precautions (SP) +/- transmission-based precautions for all patients.

Areas		Recommended personal protective equipment (PPE)
Routine patient care	High -risk patient areas ^(b)	<ul style="list-style-type: none"> ● N95 respirator^(c) (Surgical mask could be an alternative for AED triage station base on nature of encounter upon risk assessment), eye protection^(d), gown , gloves and cap^(e)
	Other patient areas	<ul style="list-style-type: none"> ● SP +/- Transmission based precautions
Performing aerosol-generating procedures(a)	High -risk patient areas ^(b)	<ul style="list-style-type: none"> ● N95 respirator, eye protection^(d), gown, gloves and cap^(e); ● Place patient in a negative pressure airborne infection isolation room (AIIR).
	Other patient areas	<ul style="list-style-type: none"> ● Surgical mask/ N95 respirator^(c) , eye protection^(d), gown, gloves and cap^(e) ● Perform all aerosol generating procedures in a well-ventilated area (e.g. mechanical ventilation with minimum of 6 air changes per hour (ACH) or use portable HEPA filter e.g. IQ Air if indicated).
No patient contact	High-risk patient areas ^(b)	<ul style="list-style-type: none"> ● Surgical mask
	Other patient areas	<ul style="list-style-type: none"> ● Surgical mask for signs and symptoms of respiratory infection
	Non-patient areas	<ul style="list-style-type: none"> ● Surgical mask for signs and symptoms of respiratory infection

Remarks

a) Aerosol- generating procedures with increased risk of respiratory infection transmission)

- Autopsy
- Bronchoscopy
- Cardiopulmonary resuscitation
- Endotracheal intubation
- High-frequency oscillatory ventilation
- Nebulizer therapy
- Non-invasive positive pressure ventilation (BiPAP & CPAP)
- Open suctioning of respiratory tract (including tracheostomy care)
- Sputum induction

NPA and high flow oxygen (6L/min) are theoretically at risk of dispersal of infectious respiratory droplets. In high risk areas, these procedures should be performed in conditions as required for aerosol-generating procedures

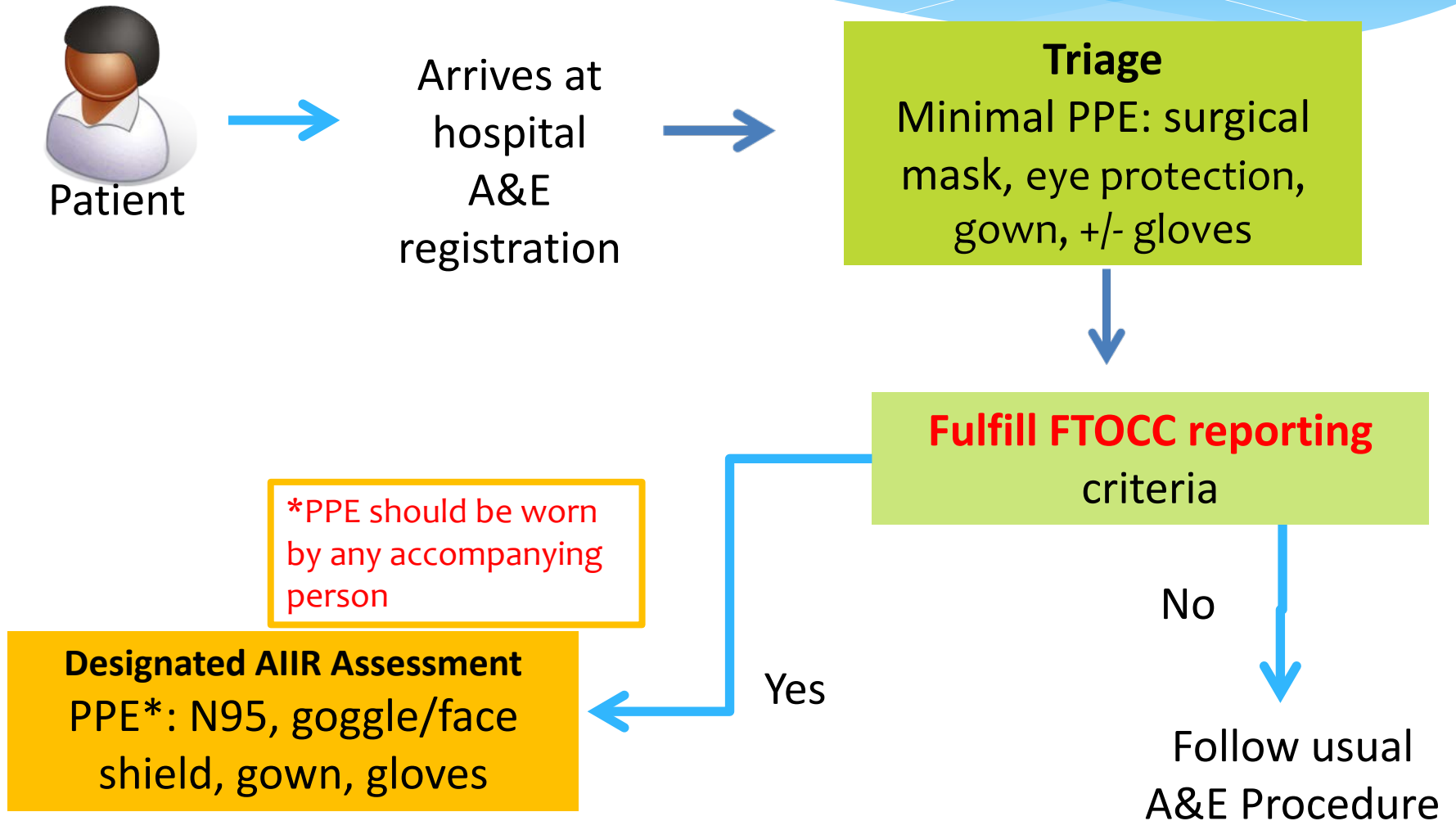
Remarks

- b) High-risk patient areas refer to triage stations of out-patient clinics, designated fever clinics, Accident & Emergency department and isolation rooms for suspected or confirmed H7N9 patients
- c) Based on transmission-based precautions and risk assessment
- d) Eye protection refers to full face shield or goggles or eye-visors
- e) Cap is optional

Compare on Interim Guidance for IC Within Healthcare Settings When Caring for Patients with Confirmed, Probable, or Cases Under Investigation of AI(H7N9) Virus Infection

IC recommendations	HK	CDC	WHO	Taiwan	Shanghai
Isolation precautions	Standard +droplet +contact +airborne	Standard +contact +airborne	Standard +droplet +contact	Standard +droplet +contact	Standard +droplet +contact
Hand Hygiene	√	√	√	√	√
Gloves	√	√	√	√	√
Gowns	√	√	√	√	√
Eye protection (goggles/face shield)	√	√	√	√	√
N95 respirator	√	√	√ for AGP	√	√
Surgical mask	√(triage)		√	√(triage)	
Cap	optional				√
Patient placement	AIIR	AIIR	Single room AIIR (Not routinely)	AIIR	
AGP	Postpone / medical necessary -AIIR -limit staff -N95 respirator, eye protection, gown, gloves	Postpone / medical necessary -AIIR -limit staff -N95 respirator, eye protection, gown, gloves	N95 respirator, eye protection, gown, gloves	N95 respirator, eye protection, gown, gloves	N95 respirator, eye protection, gown, gloves, cap, shoe covers

Flow for A&E Triage



Other infection control measures

Transport of patient

- Patient : Wear surgical mask if no contraindication
- Staff: Put on PPE

Environmental decontamination

- At least twice daily with hypochlorite solution (1:49 1,000ppm)
- Use 70% Alcohol for metal surface
- Terminal disinfection upon patient discharge

Decontamination of health care equipment

- Dedicate individual equipment
- Disinfect shared equipment before use on the next patient
- Use bedpan washer for disinfection of bedpans and urinals

Other infection control measures

Linen Handling

- All linen from avian influenza should be classified as **infected linen**
- Pack on site and avoid shaking
- Send to laundry as soon as possible

Waste Management

- All waste from suspected or confirmed AI (H7N9) patients are classified as **clinical waste (red bag)**
- Staff removing wastes should wear appropriate PPE



Handling of Dead Body

- Handling and disposal of dead body according to

Cat. 2 (YELLOW label)

Danger of Infection 小心傳染				Category 類別 2
In handling dead bodies, Standard Precautions are required. 處理屍體時需要採取標準預防措施。 In addition, the following precautions are also required: 此外，下列附加的預防措施亦必須採納：				
Bagging 入屍袋	Viewing in funeral parlour 殯儀館內瞻仰遺容	Embalming 防腐處理	Hygienic preparation in funeral parlour 殯儀館內裝身及化妝	
Must 必須	Allowed 可以	Not allowed 不可以	Allowed with disposable gloves, apron and surgical mask 可以，但必須戴上用後即棄的手套、圍裙和外料口罩	

Other infection control measures

Administration support

- Ensure adequate resources, issue formal instructions for visitors and patients and post appropriate signage
- Monitor staff sickness
- Advise staff to report sick for respiratory symptoms or pneumonia to supervisor

The Government of the Hong Kong Special Administrative Region (HKSARG)

Preparedness Plan for Influenza Pandemic (2012)

Three response levels:

Alert

Serious

Emergency

戒備 (Alert)

In accordance with the Hong Kong Government's Preparedness Plan for Influenza Pandemic, the Hospital Authority has implemented measures for the Alert Response Level. Hospital visitors and the public must follow instructions below:

- 進入及離開醫院前，請徹底清潔雙手 (Clean your hands before and after visiting hospital)
- 每次探病只限2人 (Only 2 persons are allowed for every visit)
- 每日不多於 [] (No more than [] daily)

嚴重 (Serious)

In accordance with the Hong Kong Government's Preparedness Plan for Influenza Pandemic, the Hospital Authority has implemented measures for the Serious Response Level. Hospital visitors and the public must follow instructions below:

- 進入及離開醫院前，請徹底清潔雙手 (Clean your hands before and after visiting hospital)
- 請預先登記 (Perform registration before visiting)
- 每日不多於 [] (No more than [] daily)

緊急 (Emergency)

In accordance with the Hong Kong Government's Preparedness Plan for Influenza Pandemic, the Hospital Authority has implemented measures for the Emergency Response Level. Hospital visitors and the public must follow instructions below:

- 進入及離開醫院/診所前，請徹底清潔雙手 (Wash your hands before and after visiting hospital/clinic)
- 必須情況下，訪客可能被要求登記身分，以便日後跟進 (Visitors may be required to provide personal information for future follow-up)
- 所有病人護理區內 (例如：病房、門診及急症室)，必須佩戴外科手術口罩 (Wear a surgical mask in all patient care areas)
- 請預先自行量度體溫，監察健康狀況 (Perform temperature check before visiting a hospital and monitor your health situation)
- 每次探病只限2人 (Only 2 persons are allowed for every visit)
- 每日不多於 [] 小時 (No more than [] hours daily)
- 每日 [] 至 [] (Daily [] to [])

Port health measures

- * Temperature screening to all passengers at ports of entry
- * Port Health will follow the existing referral mechanism for AI:
- * Compulsory referral → HAIDC
- * Advisory referral → nearest A&E
- * Referral network:

Ports of entry	Nearest HA AEDs
香港國際機場、葵涌貨櫃碼頭	PMH IDC
上環港澳碼頭	QMH
尖沙咀中港碼頭、海運大廈碼頭、紅磡管制站、油麻地避風塘	QEH
深圳灣管制站	TMH
羅湖管制站、落馬洲管制站、落馬洲支線管制站、沙頭角管制站、文錦渡管制站	NDH
啟德郵輪碼頭	UCH

- * FSD's ambulance service will be called for case conveyance



衛生署

衛生防護中心乃衛生署
轄下執行疾病預防
及控制的專業機構

市民

醫護專業

院舍及學校

業界及工作場所

字體大小

A A A

預防金達威

短片

勤洗手 別做傳染病

ha.home



HA Internet | News Centre | Events | Awards | eKG | T&D | Resources | Guidelines | Contingency Plans

HAHO and Clusters

HAHO

HKEC

HKWC

KCC

KEC

KWC

NTEC

NTWC

Video



預防感染 H7N9

Allied Health

Doctors

Nurses

Staff

Hong Kong Training Portal on Infection Control and Infectious Disease

香港感染控制及傳染病培訓網上通



Home

About us

IDCTC

CHP

HA

Booking

VNC

Electron

Webma

Subscri

Documents

What's New

Training Calendar

Infectious Disease

Resources e-cabinet

Infection Control

Resources e-Cabinet

Useful Links

Contact Us

New / Revised

Infection Control &

Infectious Disease

Guidelines

FAQ | Support

Copyright©2013

You are the 70746 visitor(s)

Training Calendar

< > April, 2013

31	1	2	3	4	5	6
7	8	9	10	11	12	13
14	15	16	17	18	19	20
21	22	23	24	25	26	27
28	29	30	1	2	3	4

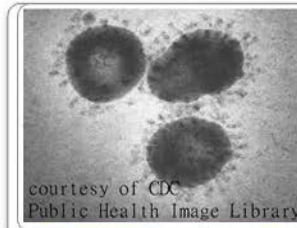
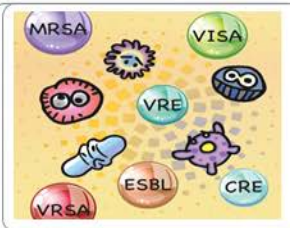
What's New

- Seasonal Influenza Vaccination 2012-2013
- Novel Coronavirus Infection
- Scientific Seminar on Infection Control
- Hand Hygiene Awareness Day 2012
- Scientific Seminar: Transmission of HIV in

More

Hot Search

Novel Coronavirus Infection
Influenza
Infection Control Forum



courtesy of CDC
Public Health Image Library

Useful Links

Organization	Link
Hong Kong Training Portal on Infection Control and Infectious Disease	<p>Internet http://icidportal.ha.org.hk/sites/en/webpages/Novel_Coronavirus.aspx?PageView=Shared</p> <p>Intranet http://icidportal.home/sites/en/webpages/Novel%20Coronavirus.aspx</p>
Centre for Health Protection	http://www.chp.gov.hk/
Hospital Authority	http://www.ha.org.hk
World Health Organization	http://www.who.int/en/
Health Protection Agency	http://www.hpa.org.uk/

Thank You

Visiting Policy

- * Children under 12 are generally not permitted in patient care area unless with prior approval
- * Pregnant women are strongly discouraged from visiting the hospital.
- * People with signs and symptoms of influenza-like illness or other infectious diseases should not visit hospitals
- * “No visiting” to isolation wards unless on compassionate ground, e.g. paediatric patients. Registration is required and the number of visitors be kept to minimum and the risk of infection explained to the visitors
- * Advise visitors to comply with infection control precautions, correct use of PPE and hand hygiene